



Quick Guide courtesy of County of Los Angeles

QUICK GUIDE TO UPPER RUSTIC CANYON TRAIL

DESCRIPTION: This trail is part of the Rustic Canyon System. Only a short segment is located in Topanga State Park, but the trail continues through Sanitation District property and Camp Josepho Boy Scout Camp, connecting with Bay Tree Trail. This segment starts on a ridge at Mullholland Drive, where trail users can enjoy views of the Santa Monica Mountains, and quickly descends south into the canyon floor.

DIRECTIONS: The trail can be accessed from the staging area in Marvin Braude Mulholland Gateway Park via Mullholland Dr. From the 101, exit at Reseda Blvd in Encino and head south. Travel 3.5 miles to the end. Park on the right and continue on foot along dirt road to Mullholland Dr. Keep left at the fork to continue on Mullholland Drive for 0.7 miles.

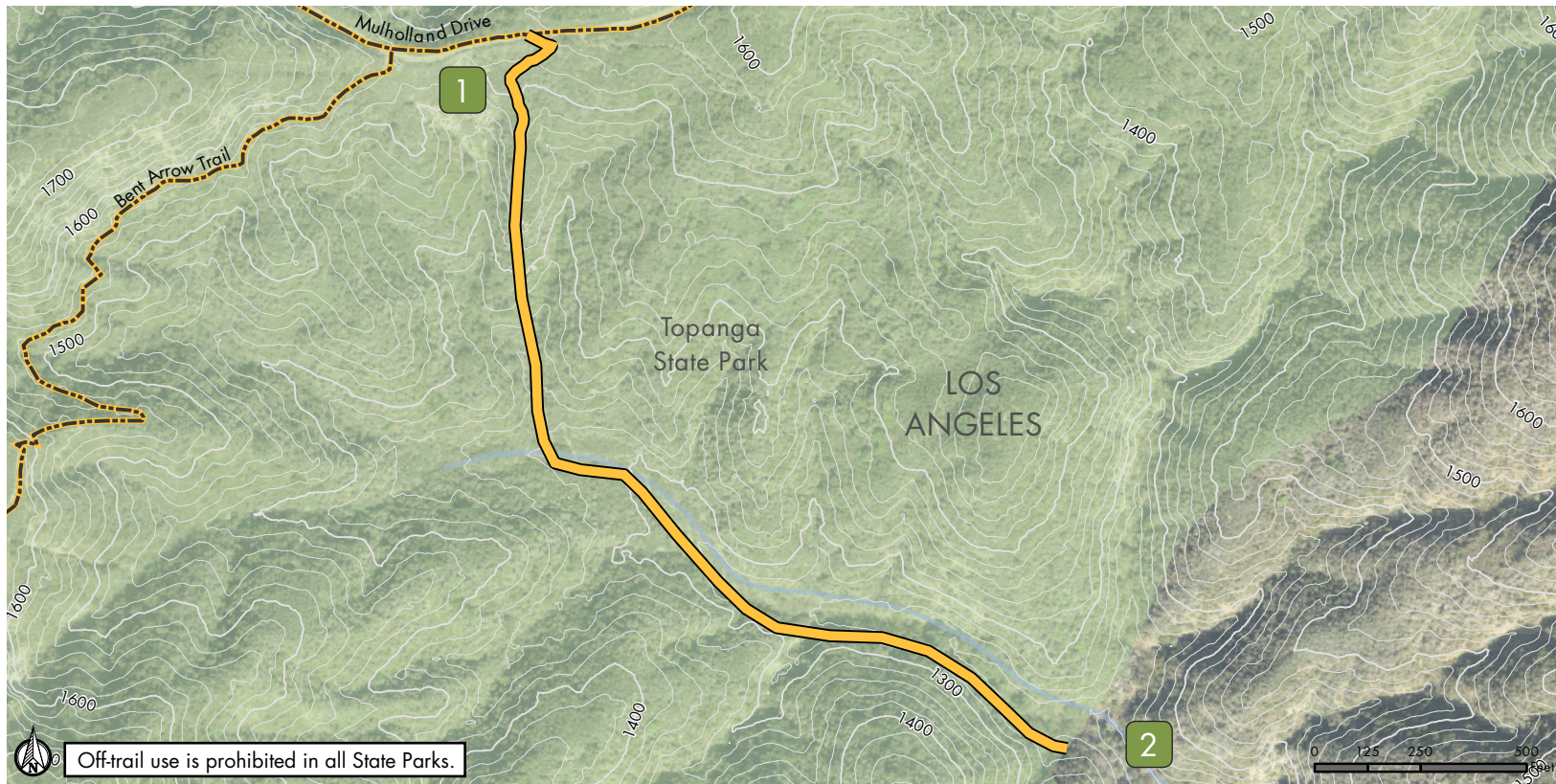
SANTA MONICA MOUNTAINS NATIONAL RECREATION AREA



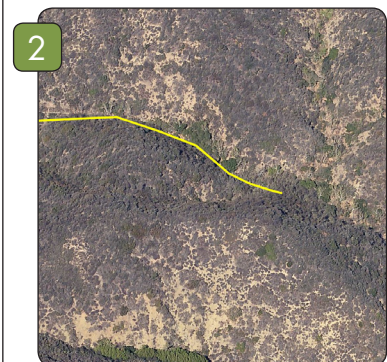
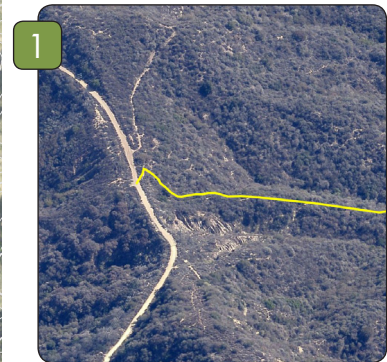
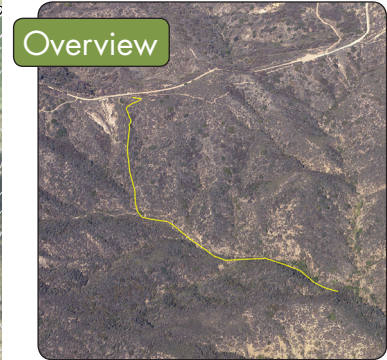
TOPANGA STATE PARK

Length: 0.48 miles

Elevation Gain: 299 feet



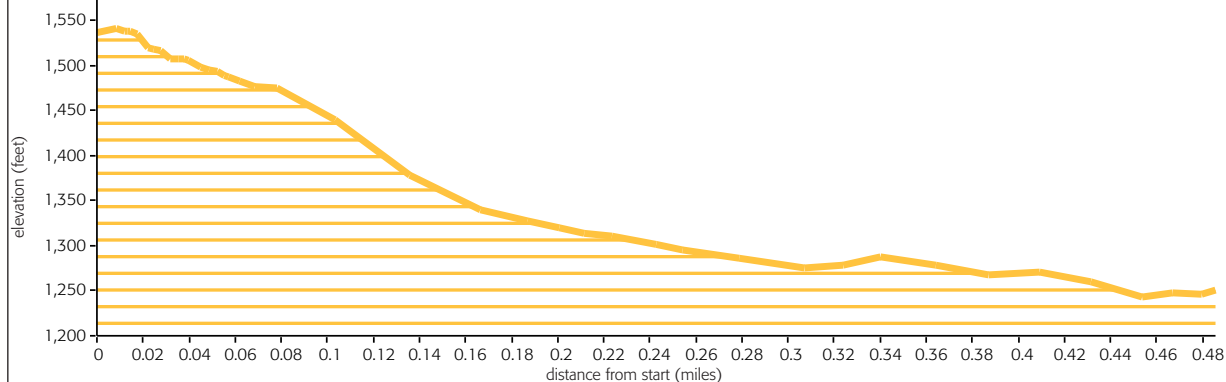
Off-trail use is prohibited in all State Parks.



Trail Type

— Natural Trail

■ Public Parkland and Other Protected Open Space



QUICKGUIDE INFORMATION

COURTESY OF THE COUNTY OF LOS ANGELES | DEPARTMENT OF PARKS AND RECREATION

SAFETY FIRST



In case of **EMERGENCY** dial 911.

For non-emergencies on County trails call the Los Angeles County Sheriff's Parks Bureau Dispatch at (800) 834-0064.

HAZARDS ON THE TRAIL



Rattlesnakes occasionally sun themselves in the middle of the trail. If encountered, keep your distance and allow space for the snake to retreat.



Poison oak can be identified by groups of 3 leaves going up the branch. It's best avoided by staying on the trail and wearing long pants and long-sleeved shirts to prevent contact with skin.



Ticks are most often found in shaded, grassy areas off the beaten path. Stick to established trails and wear long pants to avoid contact. Check for ticks frequently, especially the scalp, waist and other dark places where they can hide.

SHARE THE TRAIL



When trail conditions require a right of way for safe passage, **equestrian users have the primary right of way, hikers next and then mountain bikers**. When trail conditions allow and when there is width to safely pass, common courtesy should prevail for all users. Stand to one side of the trail and allow them to pass. When in a group, avoid blocking the trail. **Mountain bikers yield to all trail users**. Anticipate other trail users as you ride around corners. Mountain bikers traveling downhill must yield to all users, including other mountain bikers, headed uphill. In general, make each pass a safe and courteous one.

WHAT TO BRING

- ✓ Water for you and your animal(s)
- ✓ Trail map
- ✓ High energy snacks
- ✓ Waste bags for your dog
- ✓ First aid kit
- ✓ Extra clothing
- ✓ Sunglasses/hat
- ✓ Sunscreen
- ✓ Insect repellent
- ✓ Trekking poles (optional)
- ✓ Flashlight (optional)

ADDITIONAL RESOURCES

For information visit trails.lacounty.gov or any of our partners' websites at nps.gov, parks.ca.gov, smmc.ca.gov, lamountains.com, or rmc.ca.gov. Visitor Center for Santa Monica Mountains National Recreation Area, (805) 370-2300

MAP DISCLAIMER

This map was created for informational purposes only. Reasonable effort has been made to ensure the accuracy of the maps, images, and data provided; nevertheless, some information may not be accurate.